

ATTENTION ALL STUDENTS

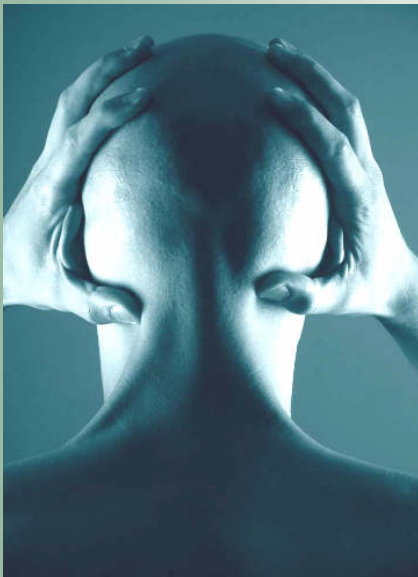
The Office for Biomedical Research & Training
MBRS-SCORE*, MARC -U- STAR**, & RISE***



Presents:

"Methods Researching the "Indispensable" Sense"

Toni L. Cordero, Ph.D., University of California-San Diego



Pain is the number one complaint that results in our seeking medical attention. While pain is an unpleasant and emotional experience, it is crucial to mammalian survival. Researching animal behavior responses that correlate with the human pain experience is extremely important to the development of pharmacologic treatments for persisting pain. This preclinical research requires scientific methods that successfully evoke, measure and reproduce animal pain behaviors. I invite you to attend my talk where I will share with you some of the basic, but essential, methods used in pre-clinical analgesia research.

Thursday, **November 15**, 2007

4:00 p.m. to 5:30

Commons 206

Refreshments will be provided

The MBRS-SCORE* (Support of Competitive Research), the MARC-U-STAR** (Minority Access to Research Careers-Undergraduate Student Training in Academic Research), and the RISE*** (Research Initiative for Scientific Enhancement).